

WARLAND

CYPRESS BUSINESS CENTER

5660 KATELLA AVE
SUITE 200
CYPRESS, CALIFORNIA



www.warlandcypress.com

FOR LEASE :: ±24,986 SF
SECOND FLOOR OFFICE SPACE

FEATURES:

- High Image Office Building
- Second Floor: ±24,986 SF Available
- Perimeter Offices on Extensive Glassline
- 4.0:1,000 Parking
- Large, Open Bay Areas
- Part of a Larger ±48,755 SF Building
- See Reverse for Floor Plan
- Call to show

AMENITIES:

- 200-Acre Planned Development
- People-Oriented Environment
- Long-term Ownership with Commitment to Building Quality
- Outstanding Labor Supply
- Expansion Flexibility
- Minutes to San Diego (405), Garden Grove (22) and San Gabriel (605) Freeways



Laird Perkins

Lic. 00966207

T +1 310 363 4920

laird.perkins@cbre.com

Brian DeRevere

Lic. 00885755

T +1 714 371 9224

brian.derevere@cbre.com

CBRE

Broker Lic. 00409987
1100 W. Town & Country Rd. Suite 1200
Orange, CA 92868

5660 KATELLA AVENUE, SUITE 200

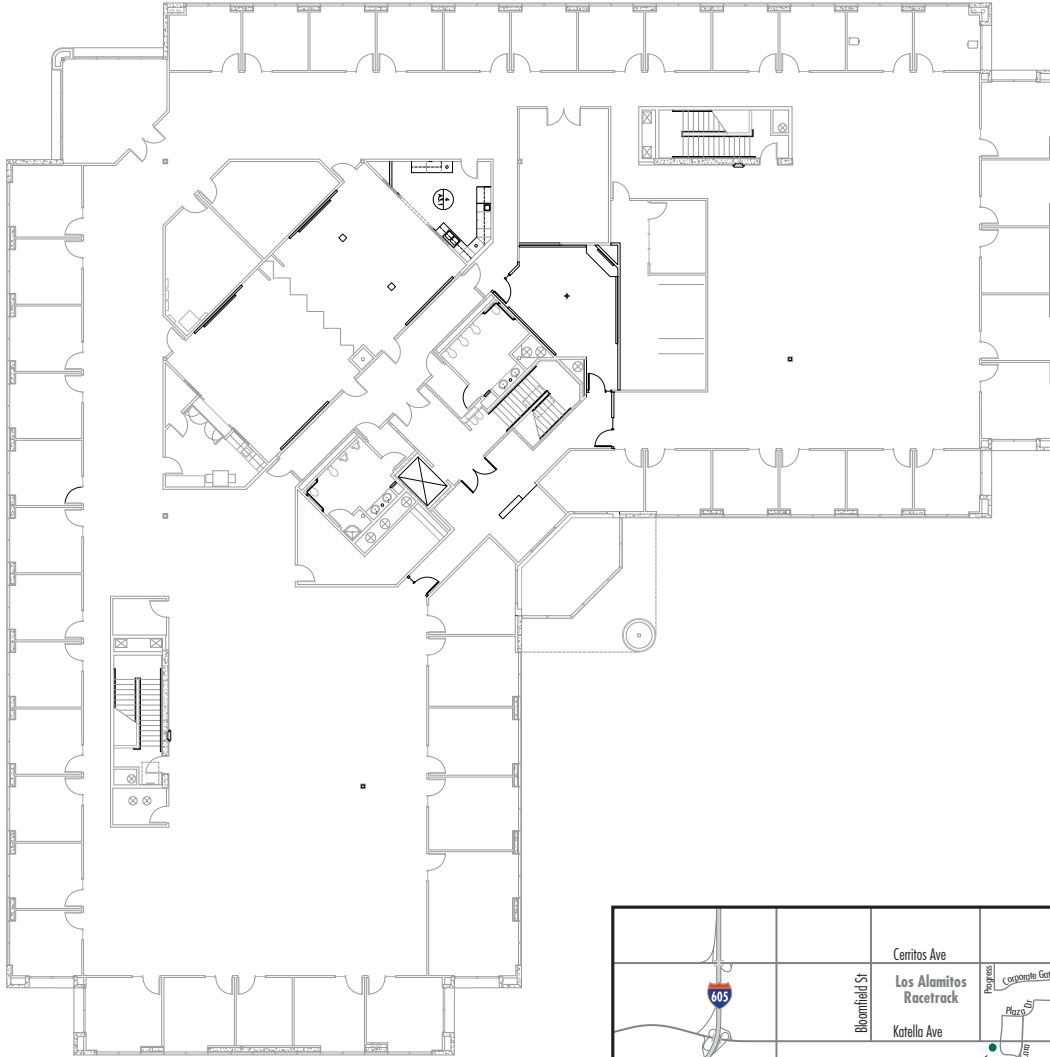
CYPRESS, CALIFORNIA

FOR LEASE :: ±24,986 SF

www.warlandcypress.com

WARLAND
CYPRESS BUSINESS CENTER

FLOOR PLAN



CORPORATE NEIGHBORS:

Evergreen Shipping	Yamaha
Siemens	Time Warner
DRS Technologies	Shaw Carpet
Johnson Controls	Rolls-Royce
Mitsubishi Electric	TDK



Laird Perkins

Lic. 00966207

T +1 310 363 4920

laird.perkins@cbre.com

Brian DeRevere

Lic. 00885755

T +1 714 371 9224

brian.derevere@cbre.com

CBRE

Broker Lic. 00409987
1100 W. Town & Country Rd. Suite 1200
Orange, CA 92868